



An Update for Partners of Feed My People

# Save the date for an upcoming Gathering!



## May 31st

Location - Blair Lutheran Church - Blair, WI

Host - Blair Food Pantry

Time - 10am-2pm

## June 28th

Location - Nazareth Lutheran Church - Withee, WI

Host - Owen-Withee Food Pantry

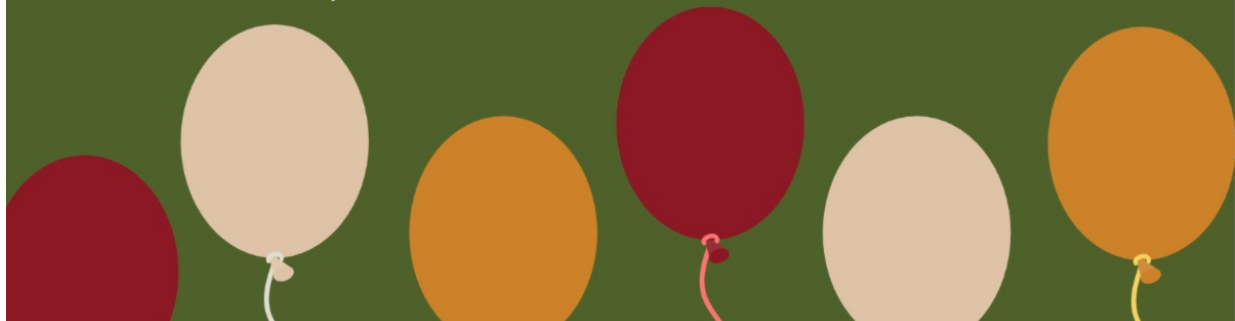
Time - 10am-2pm

## October 25th

Location - First United Methodist Church - Rice Lake, WI

Host - We Share Food Pantry

Time - 10am-2pm



### **REGIONAL AGENCY GATHERINGS**

We are excited to announce the dates for this year's partner gatherings. We will learn collectively, network with each other, share ideas, and celebrate our successes together.



## Gardening with SNAP

Did you know SNAP benefits can be used to purchase food seeds for gardening?

Gardening can be a great way to grow food and increase the fruits and vegetables available to them. It is a great way to incorporate physical activity and encourages families to try the foods they grow. If you, or someone you know, could benefit from SNAP benefits, reach out to Sarah Sharp, FoodShare Coordinator at Feed My People at [sarahs@fmpfoodbank.org](mailto:sarahs@fmpfoodbank.org) or 715.835.9415 ext. 121.

## APRIL IS VOLUNTEER MONTH

We sure are grateful for our amazing volunteers, and we bet you're also thankful for yours! April is volunteer month, so consider recognizing them with a card and a special treat.

[Share your photos with us of what you did to recognize your volunteers.](#)



## TREASURE BOXES

Looking for a great resource guaranteed to brighten the day for anyone who receives one? These boxes are filled with materials that focus on bringing awareness to mental health, kindness, care resources, and guidance to one's overall well-being. Materials for all ages are available. Connect with with Kjersten at [kjersten@rewiredandreal.com](mailto:kjersten@rewiredandreal.com) if funding is an issue, and she will help secure local funding. [Learn more.](#)

Food Rescue  
Opportunities



Feed My People | 2610 Alpine Road, Eau Claire, WI 54703

[Unsubscribe susie@fmpfoodbank.org](mailto:susie@fmpfoodbank.org)

[Update Profile](#) | [Constant Contact Data Notice](#)

Sent by [ashleyo@fmpfoodbank.org](mailto:ashleyo@fmpfoodbank.org) in collaboration  
with



Try email marketing for free today!