

# FMP PARTNER GAZETTE

TOGETHER, ENDING HUNGER IS POSSIBLE.

January 12th, 2023

## What do you want to do in 2023?



LETTUCE DO  
OUR BEST AND  
ACHIEVE ALL  
OUR GOALS!

EMM  
ROY

We are looking forward to what this year will bring! Entering in the new year is always a great time to think about what goals you'd like to accomplish in the next 12 months. What are some things your hunger relief program would like to accomplish this year?

"Lettuce" know in this brief [survey](#)

## Upcoming 2023 Closures

The next closure for FMP will be Monday January 16th for MLK day. The order deadline for all Tuesday January 17th deliveries/pickups is 8am Thursday January 12th. The order deadline for all Wednesday January 18th deliveries/pickups is 8am Friday January 18th. Feel free to download our [closures](#) so you can update your calendars.



**FMP 2023 Closures –**

Monday – January 2<sup>nd</sup>

Monday – January 16<sup>th</sup>

Monday – February 20<sup>th</sup>

Friday – April 7<sup>th</sup> (close at noon)

Monday – May 29<sup>th</sup>

Monday – June 19<sup>th</sup>

Tuesday – July 4<sup>th</sup>

Monday – September 4<sup>th</sup>

Friday – November 10<sup>th</sup>

Thursday – November 23<sup>rd</sup>

Friday – November 24<sup>th</sup>

Monday – December 25<sup>th</sup>

Tuesday – December 26<sup>th</sup>

## Changes to FoodShare coming in February



We know that there are changes coming to FoodShare involving Emergency Allotments ending in February due to federal action taken in the recent spending bill. FMP recognizes that these changes may affect the number of people your agency is serving. Please let us know how we can assist you if you are experiencing challenges with increased need. We are more than willing to work together to help you serve your community.

# Food Rescue Partners Needed!

Our need for more food rescue partners has increased! If you are interested in partnering with one of the following retail donors please contact [Tina](#)

Some things to keep in mind when considering Food Rescue are a weekly pick up commitment, storage space, how frequently you can distribute product, and if you are less than 30 minutes away from the store.



Located : 1130 W  
Macarthur Ave, Eau Claire  
WI 54701

Partner needed asap



Located: 108 W Madison St.  
Eau Claire WI 54703

Partner needed before  
January 31st.



Located: 4395 N Town Hall  
Rd, Eau Claire WI 54703

Partner needed before  
January 31st.

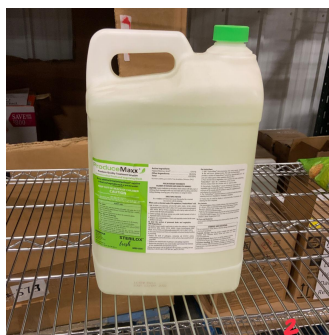
## Product Highlight

Recently we've had a few very specific heavy duty cleaners donated to FMP. We are looking for a few agencies that we can rehome these to. Please let us know if your agency would benefit from these products and we will be sure to add them to an order for free.



**Block Whitener** - Cleans and destains soiled white cutting boards from cutting meats, produce and seafood.

Currently have 5 cases of this product - each case has 4 gallons



**Produce Maxx, an EPA Registered Antimicrobial Wash for Produce**, is a revolutionary way to enhance the handling, processing, and washing of fruits and vegetables by reducing cross-contamination of pathogens and spoilage organisms in the wash water.

We currently have 2 - 2.5 gallon jugs of this product



**Ecolab - Retail Chlorinated Cleaner** - is designed with superior degreasing ability. Brightens and whitens grout on floors and walls.

We currently have 3 - 2.5 gallon jugs of this product.

## Contact Us

Monday-Friday 8AM to 4PM | 715-835-9415 ext 5

**Tina Lurndal**  
Partner and Food Rescue Coordinator  
Extension 108  
[tina@fmpfoodbank.org](mailto:tina@fmpfoodbank.org)

**Tami Syverson**  
Partnership Manager  
Extension 106  
[tami@fmpfoodbank.org](mailto:tami@fmpfoodbank.org)

**Sarah Sharp**  
Partner and FoodShare Coordinator  
Extension 121  
[sarahs@fmpfoodbank.org](mailto:sarahs@fmpfoodbank.org)

*Feed My People is committed to supporting our partner programs and the people you serve. If you have any questions or comments, please contact us! We would love to talk with you.*



[Our Website](#)

Connect with us



Feed My People | 2610 Alpine Road, Eau Claire, WI 54703

[Unsubscribe susie@fmpfoodbank.org](mailto:unsubscribe_susie@fmpfoodbank.org)

[Update Profile](#) | [Constant Contact Data Notice](#)

Sent by [tina@fmpfoodbank.org](mailto:tina@fmpfoodbank.org) powered by



Try email marketing for free today!